

Who We Are

St. Paul's is a community engaging, encouraging, enriching and empowering disciples for the work of ministry in the world.

You can expect a casual, child-friendly, Christ-centered, & Spirit-filled worship experience.

We would be delighted to have you worship & learn with us!

Saturday Worship- 5 PM

Sunday Worship- 9 AM

Wednesday Bible Study- 9 AM



Pastor Erik

Pastor Erik Young
Pastor@stpaulserie.org
814-833-1761, ext. 103

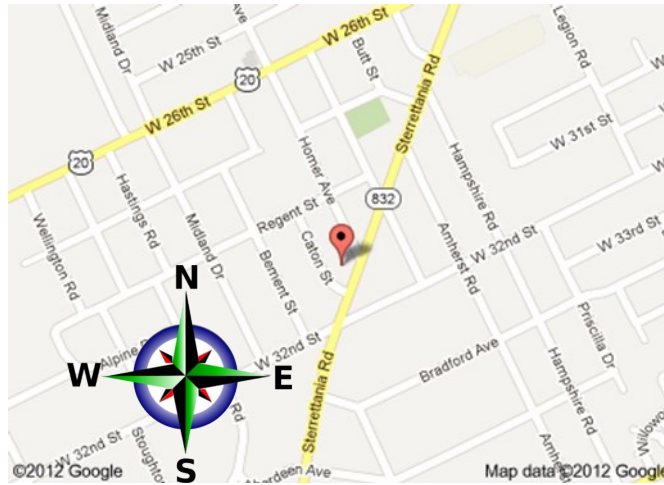
St. Paul's Lutheran Church Office Hours

9 AM to 3 PM, Monday-Thursday

Office@stpaulserie.org

814-833-1761, ext. 100

Directions & Parking



St. Paul's Lutheran Church,
3108 Sterrettania Rd, Erie, PA, 16505-2658.
Parking lot located off Caton St.



Saint Paul's
lutheran church

Rentals

3108 Sterrettania Rd.
Erie, PA 16506-2658

814-833-1761
www.stpaulserie.org
info@stpaulserie.org



St. Paul's Rentals

Our full-size gymnasium is available for rent, complete with basketball hoops and a stage. It is perfect for birthday parties, family gatherings, scouting events, and sports practices!



Fees

- \$50 deposit required; refunded upon completion of event with proper clean up, no facility damage, & keys returned to church office.
- Usage fee for the gym is \$50/hour, regardless of church membership.
- Tables & chairs are available upon request.

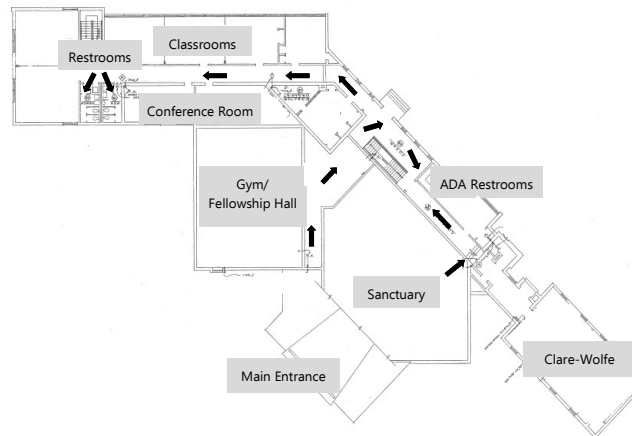
Building Use Agreement

The Building Use Agreement can be obtained at St. Paul's church office or at stpaulserie.org/rentals.

Gymnasium



Facility Map



Restrooms are located behind the sanctuary (ADA compliant) & at the end of the education hallway on the left.

Follow the arrows ↑ on the facility map.

Rental Rules

- No smoking, vaping, or other tobacco products are permitted in the building.
- No alcoholic beverages may be served, provided, or consumed on the premises.
- The group is responsible for clean up immediately following the event. All garbage & recycling must be disposed of in appropriate containers.
- If keys are needed, they must be signed out in the church office prior to the event, and returned to the church office after the event.
- The Building Use Agreement shall be signed by the person/ group responsible for the event.
- Payment in full must be received prior to the event. You can pay by check, cash, or online at [Give to St. Paul's Lutheran Church \(breezechms.com\)](http://Give.to.St.Paul's.Lutheran.Church.breezechms.com).

Contact Us

If you would like to rent the gym, or are looking for more information, please contact the church office at Office@stpaulserie.org or 814-833-1761, ext. 100.